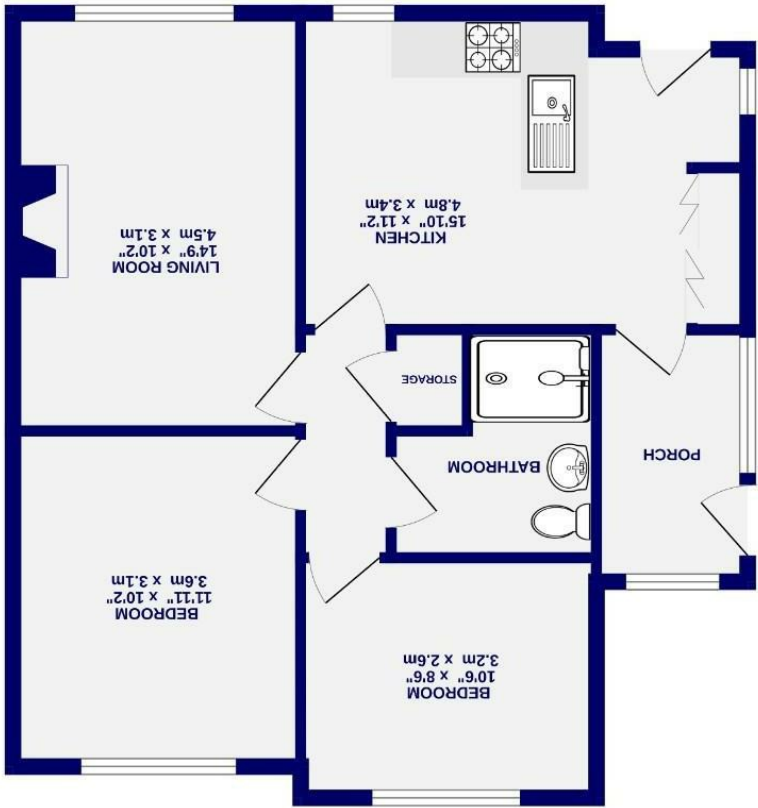




Terrington View Sheriff Hutton, York YO60 6QS

Freehold
Council Tax Band - B

- Renovated Bungalow
- Two Double Bedrooms
- Modern & Open Plan Kitchen Diner
- Ample Driveway Parking
- Pretty & Historic Village Setting
- Utility Space
- No Onward Chain
- EPC D



While every attempt has been made to ensure the accuracy of the floorplan, measurements of rooms and any other areas and no responsibility is taken for any errors, omissions or misstatements. This plan is for illustrative purposes only and should be used as a guide only. Prospective purchasers should verify the accuracy of the floor plan and no responsibility is taken for any errors, omissions or misstatements. The services, systems and appliances shown have not been tested and no guarantee as to their operation.

Made with floorplan.co.uk

These particulars have been prepared as accurately and as reliably as possible, but should not be relied upon as 'statement of fact'. If there is any point which is of particular importance to you, please contact the office and we would be pleased to check the information. We have not tested any services, appliances, equipment or facilities and nothing in these particulars should be deemed to be a statement that they are in good working order, or that the property is in good structural condition or otherwise. Any areas, measurements, floor plans or distances referred to are given as a guide only and are not precise. Purchasers must satisfy themselves by inspection or by otherwise regarding the items mentioned above and as to the correctness of each of the statements contained in these particulars. No person in the employment of Ashtons has any authority to make or give any representation or warranty whatsoever in relation to this property or these particulars nor enter into any contract relating to the property on behalf of the vendor.

Terrington View
Sheriff Hutton, York
YO60 6QS

£250,000

 2  1

A beautifully renovated two bedroom bungalow in a peaceful village setting.

Tucked away at the end of a quiet cul de sac in the ever popular village of Sheriff Hutton, this immaculately presented two bedroom semi detached bungalow has been thoughtfully modernised throughout, offering stylish and low maintenance living in a desirable rural location. Set on a generous plot, the property benefits from a neatly lawned front garden and a driveway providing off street parking for multiple vehicles.

The accommodation is entered via an open vestibule, ideal for coats and shoes, which leads into the heart of the home. The contemporary kitchen is beautifully appointed with a range of sleek units, integrated oven and hob, and smart under counter lighting. A utility cupboard provides additional storage and plumbing for a washing machine. With space for a dining table and access to the rear porch and garden beyond, this space is both practical and sociable, ideal for everyday living and entertaining alike.

Next door, the sitting room enjoys views of the garden and features a living flame fire, creating a warm and welcoming space to relax. There are two well proportioned bedrooms and a modern shower room, all finished to a high standard.

Externally, the rear garden is fully enclosed and predominantly laid to lawn with patio area for outdoor seating.

This superb bungalow is offered in walk in condition and is ideally placed to enjoy the amenities of Sheriff Hutton while offering peaceful village living within easy reach of York and surrounding areas. Offered with no onward chain, early viewing is highly recommended.

Council Tax Band- B

Disclaimer- Some of the photos are AI generated.

